

OFFICES AND LABS FOR RENT PROGRESS PARK

JOIN THE
CUTTING-EDGE
BIOTECH COMMUNITY
WHERE SCIENCE AND
BUSINESS COLLIDE

- 02 ABOUT CONTEMPORARY
MANAGEMENT
- 03 WORKING IN PROGRESS PARK
- 04 MEET THE BROKERS
- 05 13420-100
- 07 13420-200
- 09 13400
- 11 EMILIV 1
- 13 EMILIV 2
- 15 13410 THE WAREHOUSE
- 17 MAP LOCATOR



CONTEMPORARY
MANAGEMENT
EQUITY, LLC

02

ABOUT CONTEMPORARY MANAGEMENT

FOR OVER 35 YEARS,
CONTEMPORARY MANAGEMENT
CONCEPTS HAS SPECIALIZED IN
COMFORTABLE APARTMENTS
FOR FAMILIES & STUDENTS

We manage over 4000 apartment units in the state of Florida including the cities of: Gainesville, Orlando, Winter Park and Lakeland.

We recognize the value of being in *the perfect location* and we're pleased to present our Class A Offices and 10,000sq ft warehouse in dynamic Progress Park in Alachua, Florida - the area for world-renowned bio-science, tech and bio-medical development and discoveries.

Our partially furnished spaces allow you a turnkey office where you can work right away. We're able to accommodate startup companies who need to grow. We can also meet the demand for existing companies in the Park and/or surrounding area that need to operate rapidly or accommodate the needs of a rapidly expanding workforce.

03

ABOUT PROGRESS PARK

*JOIN THE CUTTING-EDGE
BIOTECH COMMUNITY
WHERE SCIENCE AND
BUSINESS COLLIDE*

HOME OF THE #1 BIOTECH
INCUBATOR IN THE WORLD

Be with industry leaders in an incubator space made for research companies and startups. From professional offices to high-tech wet & dry labs Progress Park has the space to suit your needs. Progress Park is a 204-acre medical research and biotech park with several hundred thousand square feet of office, lab, and research and development space.

The park is home to 30 companies employing approximately 1,200 people. The success of Progress Park is demonstrated with its ten year average occupancy of 95%. Bordering the Park is the 7000-acre San Felasco Hammock Preserve State Park with miles of trails for hikers, bicyclists and horseback riders.

It's located in Alachua, Florida; 15 miles northwest of Gainesville, Florida - home to the University of Florida and Santa Fe College. Enjoy a park-like office setting between centrally located about two hours from Orlando, Jacksonville, Tampa and Tallahassee.

04

CONTACT INFO

WWW.ALACHUAOFFICESPACE.COM



DEBBIE BERDY

Lic. Real Estate Broker
corporate@cmcapt.com
352.505.6966



PATRICK DAILEY

Lic. Real Estate Broker
pdailey@cmcapt.com
352.215.3119



DAVID FOX

Lic. Real Estate Agent
dfox@cmcapt.com
352.505.6966



BLDG 13420-100

- Class A Office Space
- Ample Parking Lot
- Professionally Decorated Interiors
- Furniture Available
- Warehouse / Lab Space Available
- Alarm Equipped
- Professionally Landscaped

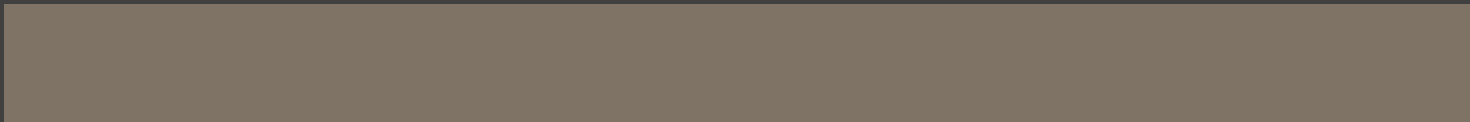


1,500 SQFT

OFFICE FEATURES

- 4 offices (*most with windows*)
- 1 bathroom
- 3 - 5 suites pending needs
- Light Lab Space
- Administration & Conference Area
- Foyer / Reception Area
- Double door access
- IT Room with fibre bandwidth
- Built In: 2009







OFFICE FEATURES

- 9 - 10 offices (*most with windows*),
2 bathrooms
- Large Executive Offices
- Administration & Conference Area
- Foyer / Reception Area
- Climate-controlled IT Room with
fibre bandwidth
- Business Center
- File Rooms
- Fully equipped kitchen and breakroom
- Built In: 2009



- Class A Office Space
- Ample Parking Lot
- Professionally Decorated
Interiors
- Furniture Available
- Warehouse / Lab Space
Available
- Alarm Equipped
- Professionally Landscaped

BLDG

13420-200



BLDG 13400

- Class A+ Office Space
- Ample Parking Lot
- Professionally Decorated Interiors
- Furniture Available
- Warehouse / Lab Space Available
- Alarm Equipped
- Professionally Landscaped



OFFICE FEATURES

- 26 offices (most with windows), 2 bathrooms
- Large Executive Offices
- Executive Boardroom
- Administration & Conference Area
- Foyer / Reception Area
- Independent, climate-controlled IT Room with fibre bandwidth
- All Weather Entry
- File Rooms
- Storage space in attic
- Fully equipped kitchen and breakroom
- Built In: 2005





5,000 SQFT ■

BLDG EMILIV 1

- Class A Office Space
- Next to The University of Florida Sid Martin Biotechnology Incubator facility
- Ample Parking Lot
- Professionally Decorated Interiors
- Furniture Available
- Warehouse / Lab Space Available
- Alarm Equipped
- Professionally Landscaped

OFFICE FEATURES

- 7 offices (most with windows), 2 bathrooms
- 70% Lab Space
- Foyer / Reception Area
- Large Conference Area
- File & Storage Room
- Generac® full-propane back-up generator
- 3 Phase Power
- Large IT Room with fibre bandwidth
- Rolling door delivery area
- Kitchenette & Break Area
- Renovated In: 2006, New Roof In: 2014



5,000 SQFT



3,600 SQFT

BLDG EMILIV 2

Class A Office Space

Next to The University of Florida
Sid Martin Biotechnology

Incubator facility

Ample Parking Lot

Professionally Decorated
Interiors

Furniture Available

Warehouse / Lab Space Available

Alarm Equipped

Professionally Landscaped



OFFICE FEATURES

5 offices (most with windows),
2 bathrooms

75% Lab Space

4 Suites - separated by fire walls &
metered separately

Separate AC units in each suite

Foyer / Reception Area

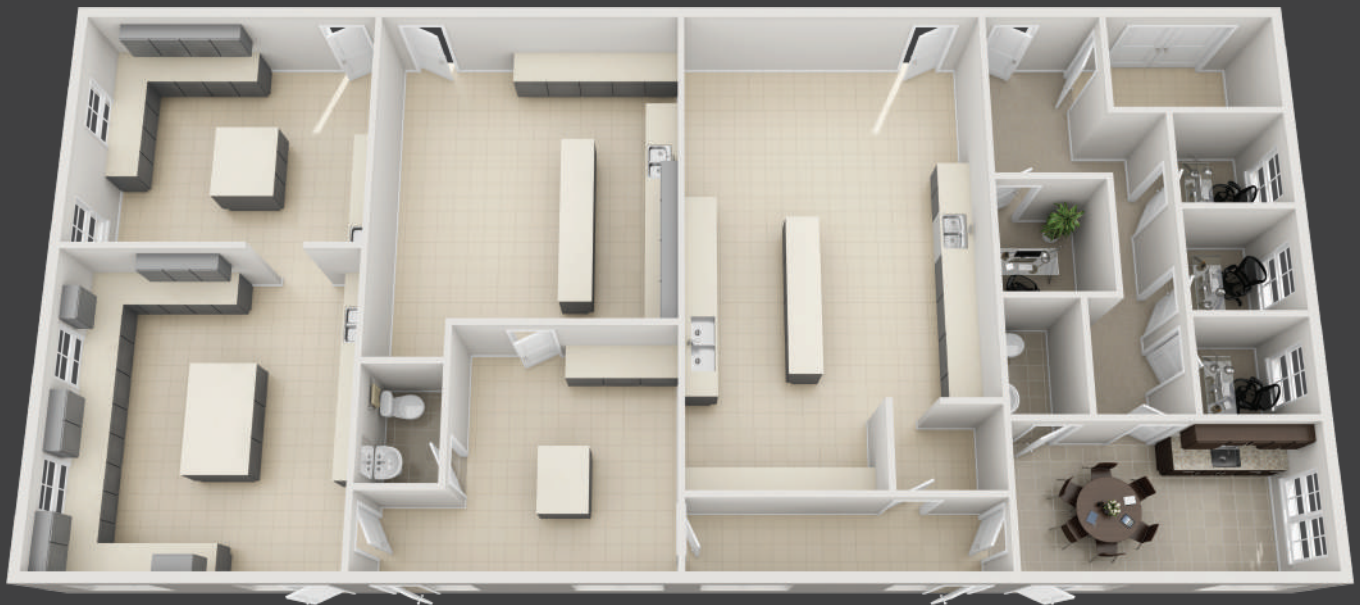
Conference Area

Storage Area

Double door access to IT Room with
fibre bandwidth

Fully equipped kitchen and
breakroom

Built In: 2008



3,600 SQFT



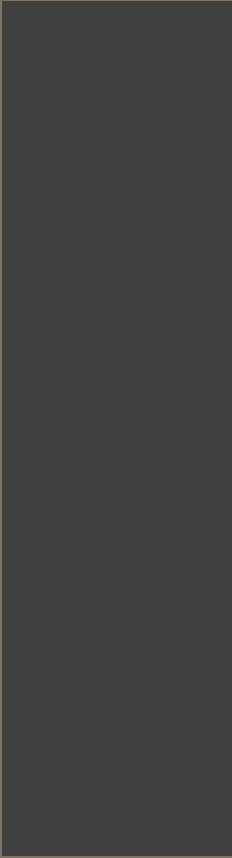
BLDG 13410 THE WAREHOUSE

- Ample Parking Lot
- Circular Driveway
- Ceiling Height:
- Rolling Door Height:
- Alarm Equipped
- Professionally Landscaped

WAREHOUSE FEATURES

- 10,000 sq ft, partitionable into 2,500 sq ft
- 2 Loading Docks
- 2 Street-level loading docks
- 3 Phase Power
- 2 Bathrooms
- Pallet Racks Available
- Ceiling Height: 13 - 15 ft
- Rolling Door Height: 12 ft
- Space can be converted into office and/or lab space
- Built: 2005





MAP LOCATOR

